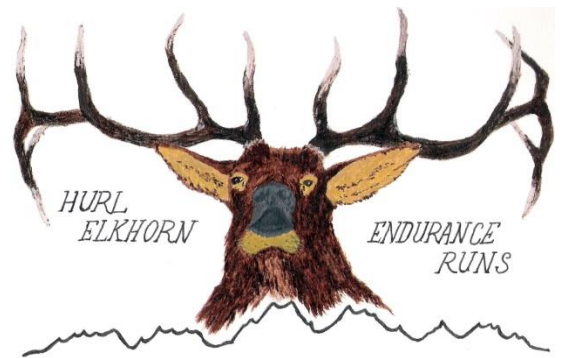
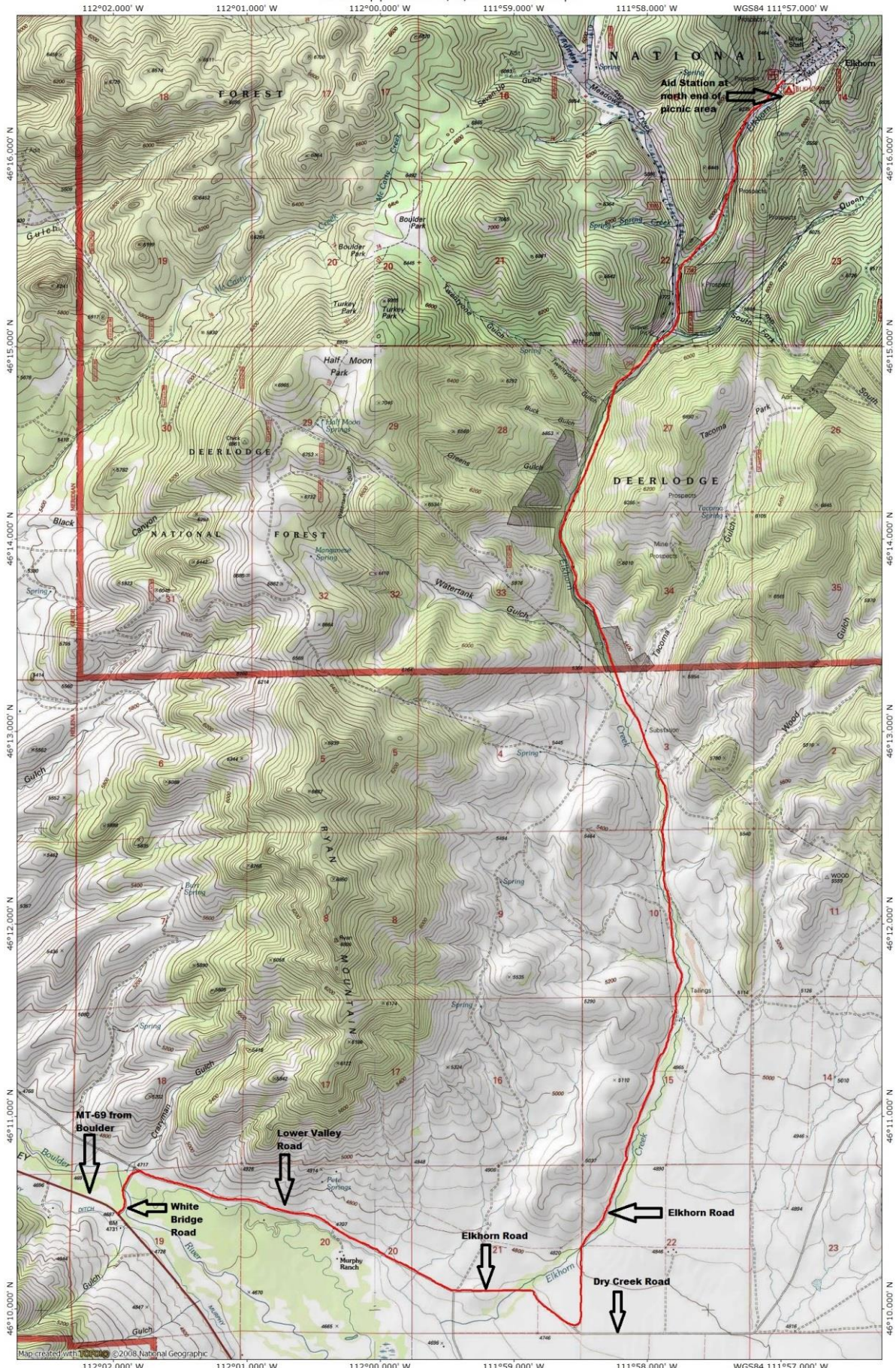


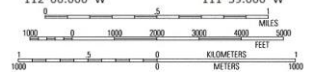
Directions to Willard Creek Trailhead (Start/Finish Area) via Clancy

- Return to Clancy via Warm Springs Creek Road
- Merge onto I-15 south toward Butte
- After approximately 17 miles, exit at Boulder (Exit 164), turn left, cross over I-15 and continue on Montana Highway 69 through Boulder
- At approximately 7 miles from I-15, turn left on White Bridge Road (there is a sign for the Town of Elkhorn). Cross the bridge over the Boulder River and veer right on Lower Valley Road
- At approximately 2 miles from Highway 69, veer left onto Dry Creek Road
- At approximately 2.8 miles from Highway 69, turn left onto Elkhorn Road
- Follow Elkhorn Road/ Forest Service Road 258 to the Town of Elkhorn, approximately 8.5 miles from Dry Creek Road
- The Aid Station is located at the north end of the picnic area on the right side of the road just as you enter the Town of Elkhorn
- Lower Valley Road, Dry Creek Road, and Elkhorn Road are all maintained dirt/gravel roads, passable by any type of vehicle
- Plan on one hour driving time between the Start/Finish area and the Town of Elkhorn





Map created with Topo! ©2008 National Geographic



TN MN 13° 04/16/13